

# Butterfly Life Cycle



twinkl

# Butterfly Life Cycle

The butterfly lays her eggs onto a leaf. These can be round, oval or cylindrical.



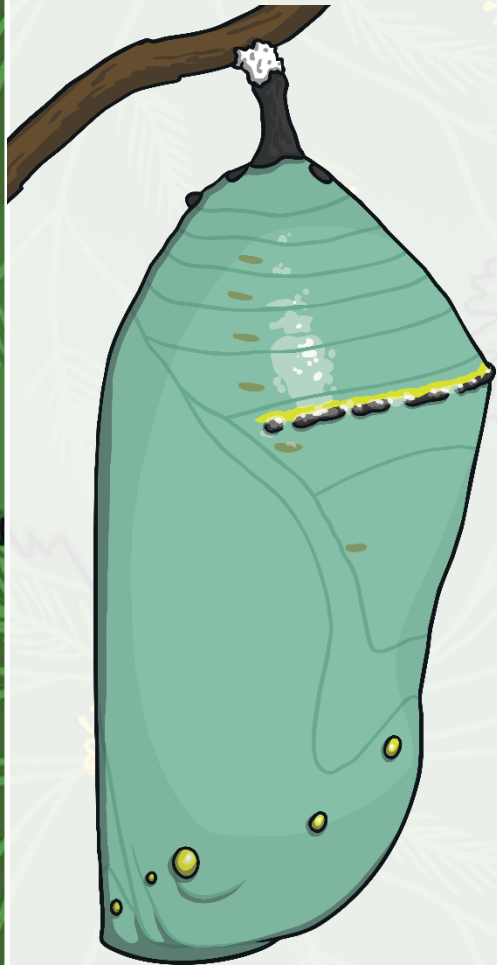
# Butterfly Life Cycle

The larva (caterpillar) hatches and works on eating the plant it was born on to grow.

It will shed its skin several times.



# Butterfly Life Cycle



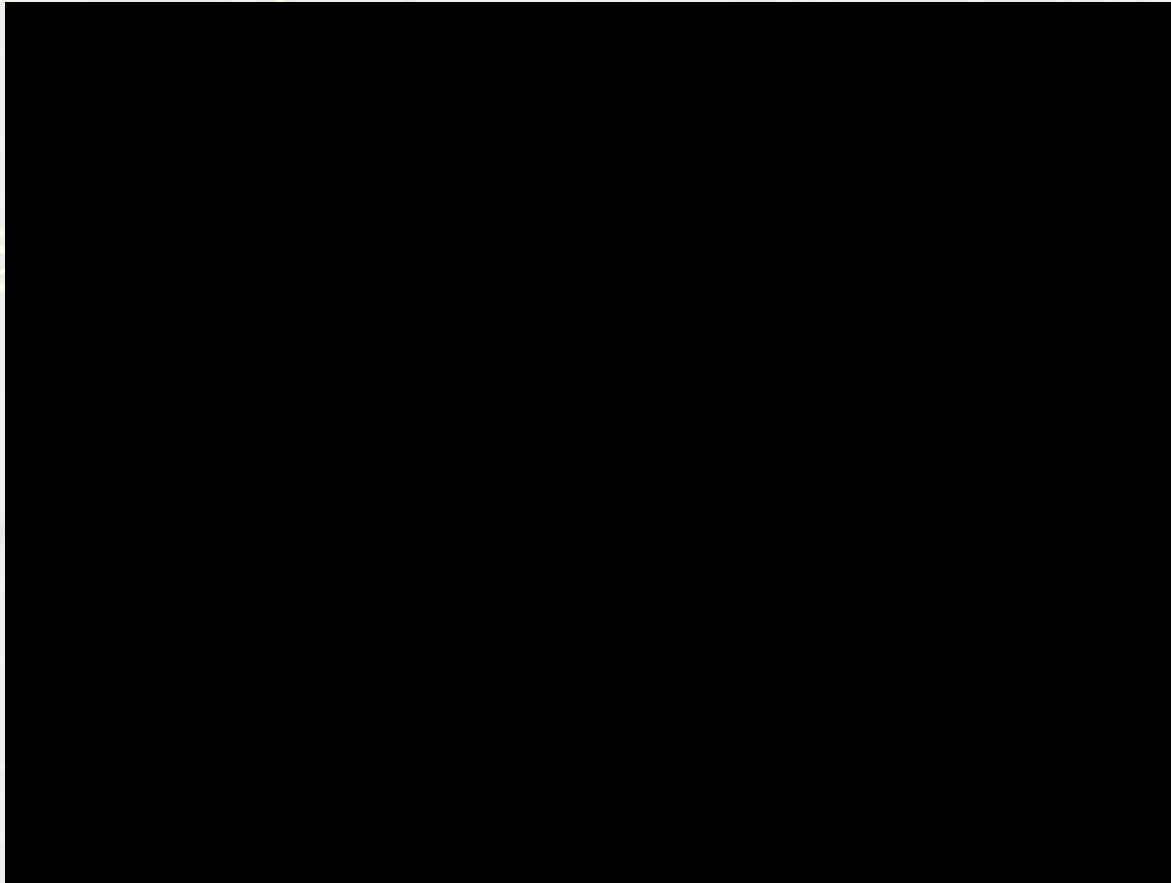
The caterpillar undergoes a process called **metamorphosis** inside its **chrysalis** or **pupa**, where it is rapidly changing.

# Butterfly Life Cycle

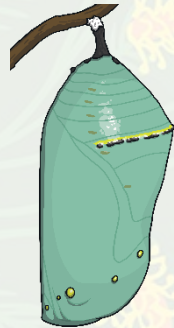
The fully formed butterfly emerges, dries its wings and then flies off to seek out a mate!



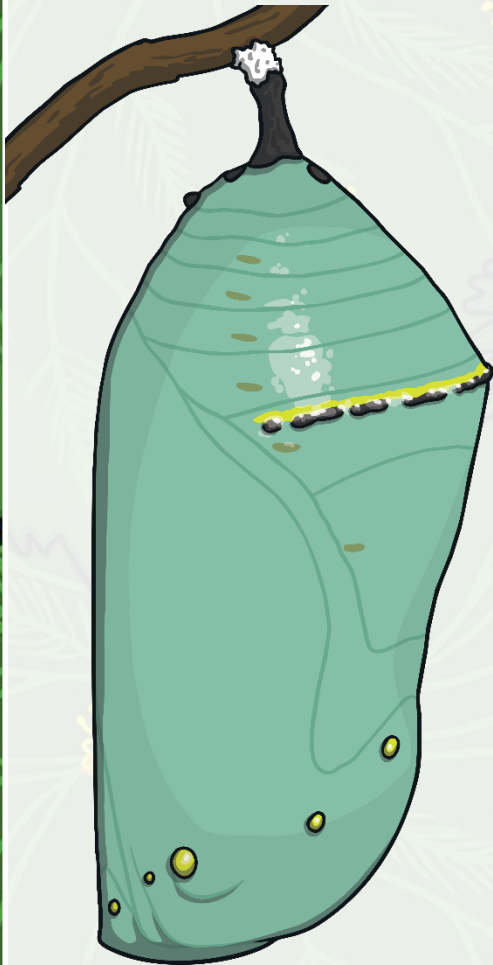
# Butterfly Life Cycle Video



# Butterfly Life Cycle



# Some Interesting Facts



- Butterflies taste with their feet.
- Butterflies are cold blooded and cannot fly or function properly if their body temperature falls below 13°C.
- Butterflies mostly live on liquid from nectar, plants or even dung!
- They tend to live for around 2-4 weeks after emerging from their chrysalis.





twinkl