

Captain Flinn and the Pirate Dinosaurs

Week beginning: 12th June 2023

This week in phonics...

We will be learning to read and write words containing the alternative digraphs 'oy' (boy), 'ay' (day), 'ea' (sea), 'ie' (tie)

We are learning to read all previously learnt tricky words, as well as spelling the tricky word 'out'.

Why this 'theme'?

We have chosen this theme as the children have been particularly interested in the water area, creating water slides and exploring capacity. They also have a great interest in dinosaurs.

This week in maths...

We will be exploring sharing and grouping with objects.

Skills Focus

Creating with materials: Safely use and explore a variety of materials, tools and techniques, experimenting with colour, design, texture, form and function.
The Natural World: Making observations.

Vocabulary

Investigate
Sort
Join
Safely

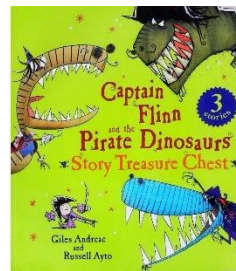
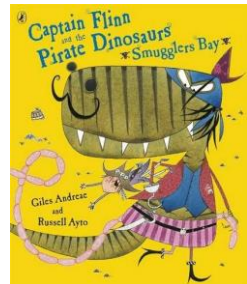
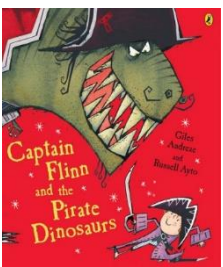
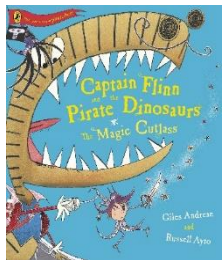
SWASHBUCKLING
TREASURE MAP
MAGIC CUTLASS
WICKED CAPTAIN FLINN
PIRATE
YO HO HO!
HARBOUR SAIL
GLEAMING
TREASURE CHEST
CAPTAIN T-REX
ATTACK!
DINOSAURS
FEROCIOUS
BOAT SHED
SHIP CREW
CLAMBERING
DUEL

Did you know...

Pirates wore eye patches over their eye they used to see in the dark.

I wonder...

Would you rather be friends with a dinosaur or a pirate? Why?



Things your child can do at home: Share pirate and dinosaur stories together, make your own pirate props (cutlass, telescope) and create your own stories, write clues to help your grown-ups find the 'treasure' you have hidden.

Homework: Create a treasure map with an x marks the spot, add labels and write clues to where the treasure is.

We are a Church of England School...

We say a prayer before lunch each day.

In our daily collective worship, we will be exploring this half-term's theme of 'Truthfulness'
This week's song: *Be bold, be strong.*

School Values:

Compassion • Courage • Responsibility



WONDERLAND

Gressenhall 'Once upon a time' day...

On Monday 19th June we have our upcoming school visit to Gressenhall. For our 'Once upon a time' themed day the children can come to school dressed in a fairy-tale character costume. Please make sure you have been on Parent App to order lunches, give medical information and pay for the trip. Please note, if we do not have enough funds collected we may not be able to go ahead with the trip.