A night-time photograph of the London Eye, a large Ferris wheel, illuminated with vibrant blue, green, and yellow lights. The wheel is positioned on the left side of the frame, with its reflection shimmering on the dark water of the River Thames in the foreground. The background shows the dark silhouettes of city buildings and other distant lights.

Y5 London Eye and Young Voices Residential

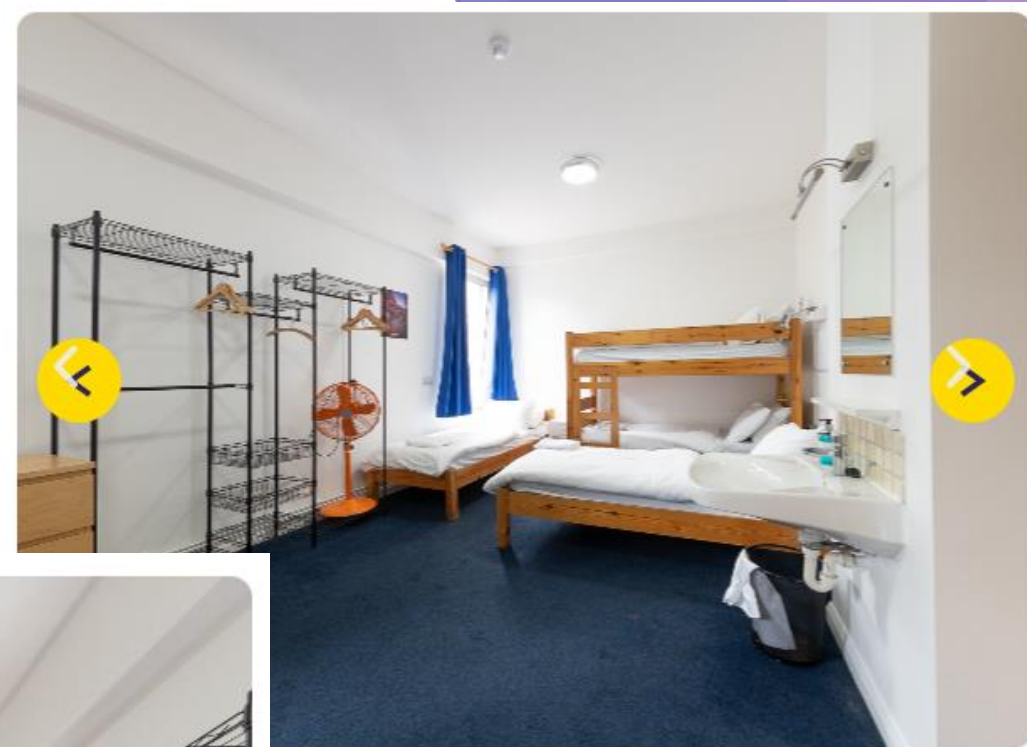
Thursday 22nd - Friday 23rd January 2026

Thursday 22nd January 2026

- ▶ Leave school at 9am in an Eastons Coach (two drivers for the whole two days)
- ▶ Staff - Mrs Kirton, Mrs Pratt, Miss Vickery, Mr Mixer
- ▶ Children to bring a packed lunch
- ▶ Stop at Birchanger for toilet stop
- ▶ Arrive at London Eye - have lunch
- ▶ 1.30pm - trip on the London Eye (we are looking into an alternative if there are children who are afraid of heights).
- ▶ Time for another activity such as London boat tour, London aquarium etc.
- ▶ Coach collects us and drive us to Pax Lodge.

Pax Lodge





- ▶ Check into Pax Lodge - find your dorm and unpack
- ▶ Evening meal at the lodge
- ▶ Games
- ▶ Sleep at Pax Lodge



Friday 23rd January 2026

- ▶ Wake up and pack bags
- ▶ Breakfast in Pax Lodge
- ▶ Staff/children make packed lunches for lunch and evening meal
- ▶ Take coach to one of the London museums
- ▶ Take coach to the O2 for Young Voices concert
- ▶ Children have lunch - packed lunch 1
- ▶ Rehearsals
- ▶ Children have evening meal - packed lunch 2
- ▶ Take part in Young Voices concert - parents can buy own tickets and come to watch us
- ▶ Coach takes us back to Horsford arrive around 1am Sat 24th - parents can collect from O2 if they wish.



Your questions answered:

Can the children share rooms with their friends?

Yes we will ask them who they would like to share with

Will other people be staying at Pax Lodge at the same time?

Yes it is open to anyone to book but we will have an area especially for our school. Full security in place as you would expect.

Can they take mobile phones/electronics?

No, they will be too busy to need these!

Can they bring pocket money?

We will let you know if we think we might be able to visit the museum shop.

Can we have the link to the O2 to buy parent tickets for Young Voices?

Yes we will send the link as soon as we have confirmed the trip is going ahead.

Will the children wear hi-vis jackets when in London?

Yes we will take these with us and ask the children to wear them whenever necessary.

Will school ensure there is enough drink for the children to have all day?

Yes and we will also ask the children to bring a refillable water bottle with them.

Will we have a payment plan?

Yes parents will be able to pay all in one go or in instalments on ParentPay.

